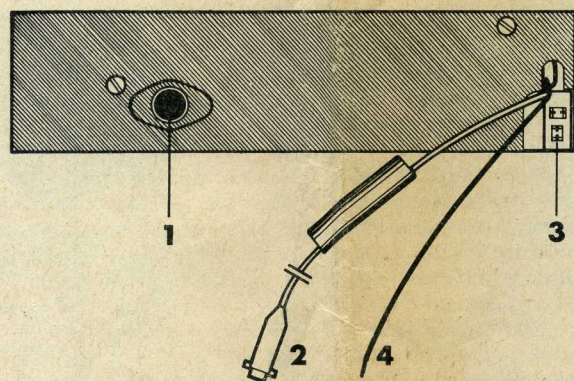


22RN314

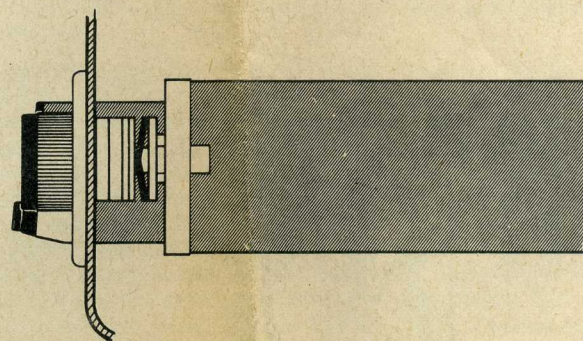
3122 105 34291

15/171



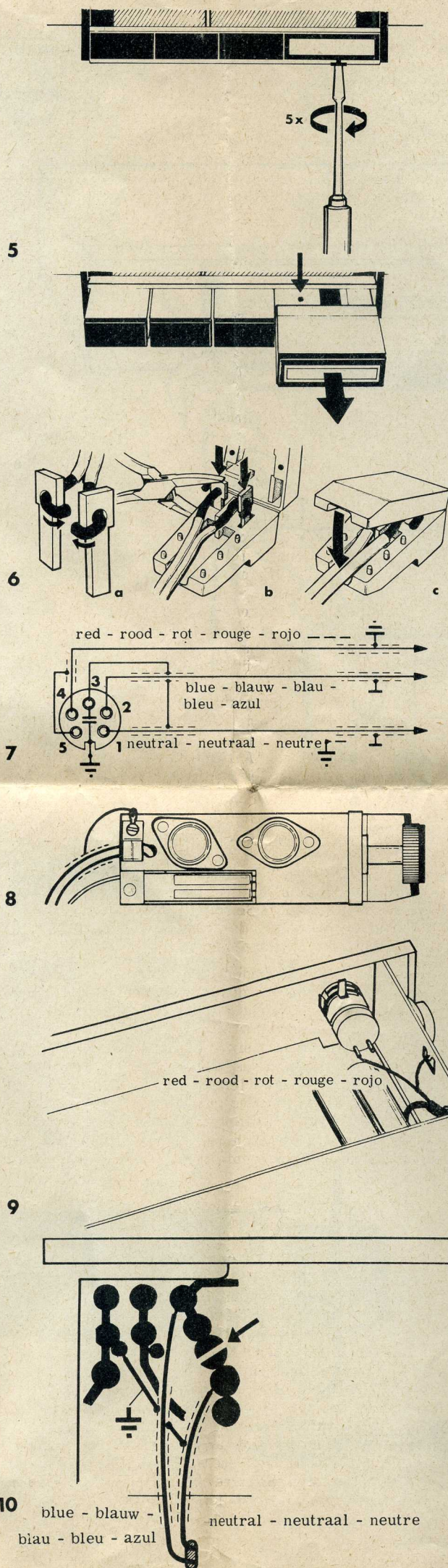
2

3



4





N.B.: Always attach the operating instructions to the set after installation.

Voltage and polarity: The set can be connected to a 12V battery with the negative pole earthed.

Aerial: Fit an aerial, suitable for the type of car concerned. Take care that the aerial is properly earthed at its mounting base. Position the aerial as far as possible away from interference sources (ignition circuit, coil, current distributor).

Loudspeaker: Depending on the type of car, fit one of our car radio loudspeakers in the dashboard (if required with the aid of a universal loudspeaker baffle) or in the rear window shelf using a special grille. If this is not possible use a loudspeaker cabinet. It is possible to connect two loudspeakers with the aid of potentiometer 22EN9745. The loudspeaker leads should be as far as possible away from interference sources.

Radio : Before installing the set, disconnect the negative battery lead to prevent short circuits.

Adjusting the aerial trimmer: Good reception is possible only if the aerial trimmer is adjusted as follows before the set is dismantled and installed :

- connect the delivered loudspeaker plug to the loudspeaker lead as indicated in fig. 6a - b and c.
- connect the loudspeaker to socket 3 (fig.2) of the set.
- connect the supply cable (and fuse delivered) to the supply cable of the set (fig.2, 2 and fig.4).
- connect the earth lead (fig.2, 4) to the chassis of the car.
- connect the supply cable (fig.2, 2) directly to the positive terminal of the battery or to the accessories terminal of the ignition switch.
- pull out the aerial and put the plug of the aerial lead in the aerial socket (fig.2, 1) of the set.
- reconnect the negative battery lead.
- remove the "turnlock button" (fig.5), switch on the set, select medium wave and tune to a low-power MW station near to 208 m (about 1450 kHz).
- turn the aerial trimmer with a small screwdriver until maximum volume is obtained (see arrow fig.5).
- disconnect the negative battery terminal again and remove all other connections until the set is fitted.

Mounting: Remove the radio cover plate, if any, from the dashboard. Where necessary, make new holes and bare the area round the holes at the rear of the dashboard. Special mounting panels to match the interior are available for a large number of cars. If you use these special panels, mounting should be done as indicated in the instructions delivered with the panel. Fit the receiver according to fig. 1. Connect the set as described under "Adjusting the aerial trimmer" till "remove the medium wave button".

Connecting play-back equipment: For connection of this equipment the following items are required : 1 five pole DIN plug 240° (codenumber 979/P6), 1 capacitor (code-number 4822 069 00627) and 1 cable \pm 30 cm. long (codenumber R365KA/805/BS8). Mount cable, capacitor and plug as indicated in fig. 7. The figure shows the soldering tags of the plug. Remove \pm 10 cm. isolation from the cable. Remove the protective cover from the set. Bring the stripped part of the cable in the set. Fix the cable with the aid of the bracket on the set (fig. 8). Solder the screening to the earth tag to which also the grey earth wire is connected (fig.8). Solder the red wire to the on/off switch (fig.9). Bring the blue and neutral wire on the other side of the printed wiring board (soldering side) and solder them as indicated in fig.10. Interrupt the printed wiring between the two soldering points (arrow in fig. 10). The screening of the three wires should be connected to earth. Replace the protective cover of the receiver.